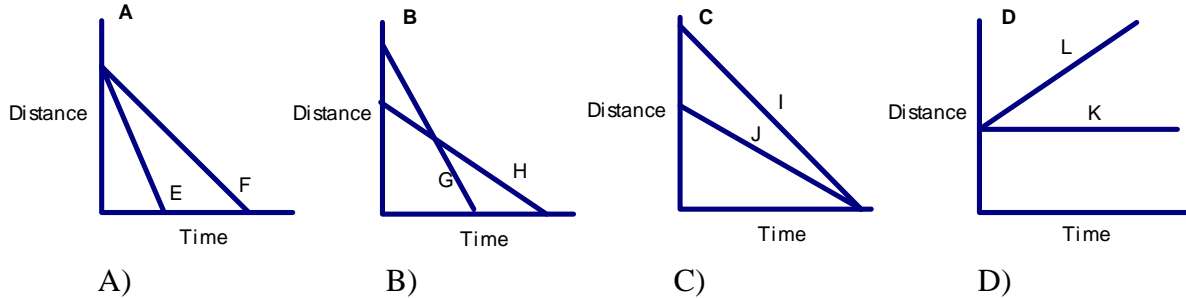


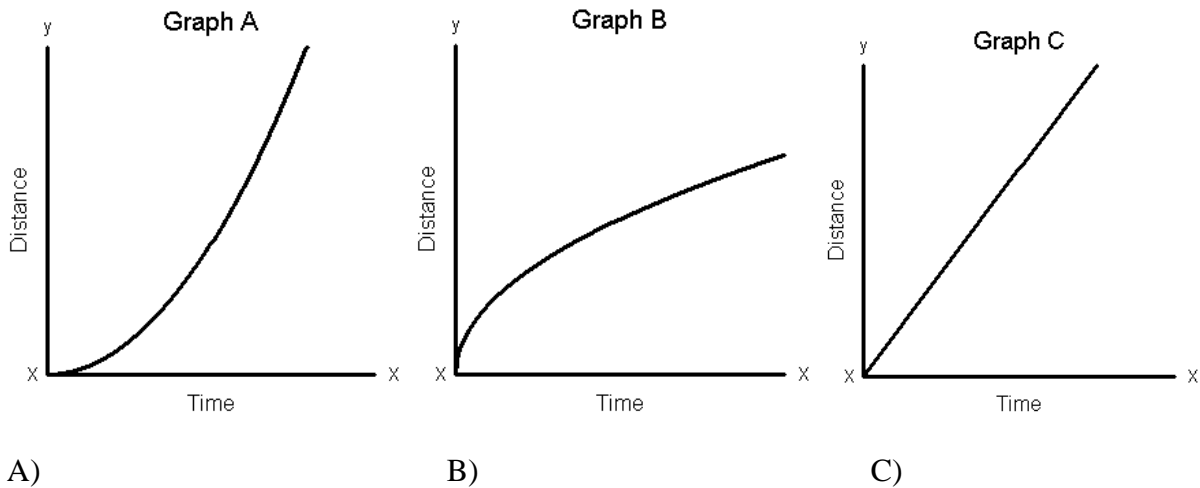
Pre 5.5b

Stories From Graphs Part III, IV

1) All the students are walking toward or away from the school or standing still. Each graph below is a story about two students. Tell the story—use the letters on the graph as the first letter for names of people in your story.



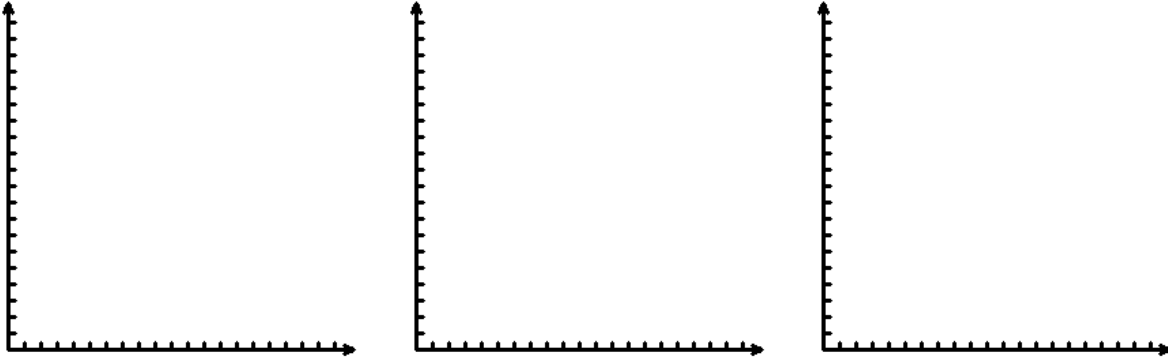
4) It is true that we don't walk at exactly the same speed all the time. The following graphs tell the stories of three different students leaving school. Write a story for the graphs which explains how the three students moved.



Part IV

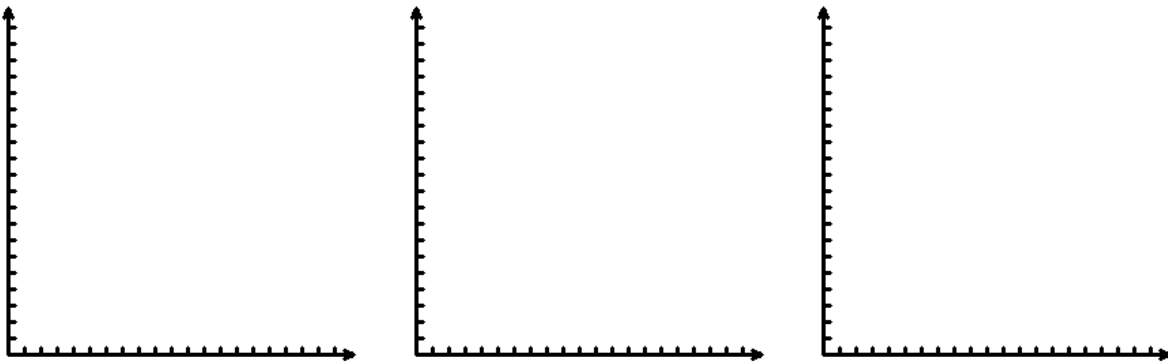
Using the CBR, try to create the graph of each of the following lines. Each person on your team must try to walk each story below. As each person tries, sketch the line they created and write a suggestion for what should be done to make their graph more closely match the story given.

- 1) a line that rises at a steady rate.



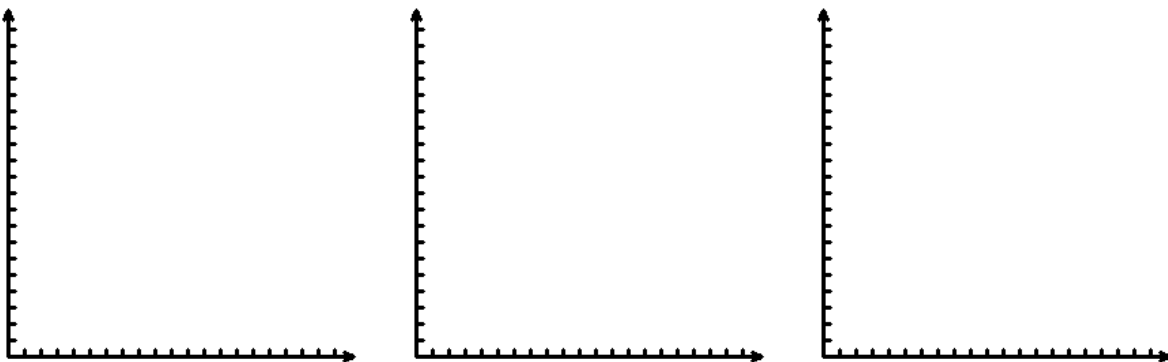
Suggestions:

- 2) A line that falls at a steady rate.



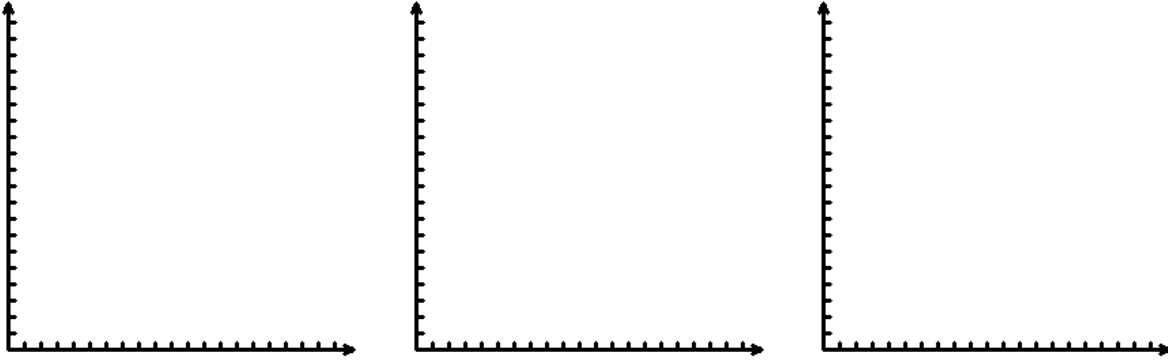
Suggestions:

- 3) A horizontal line



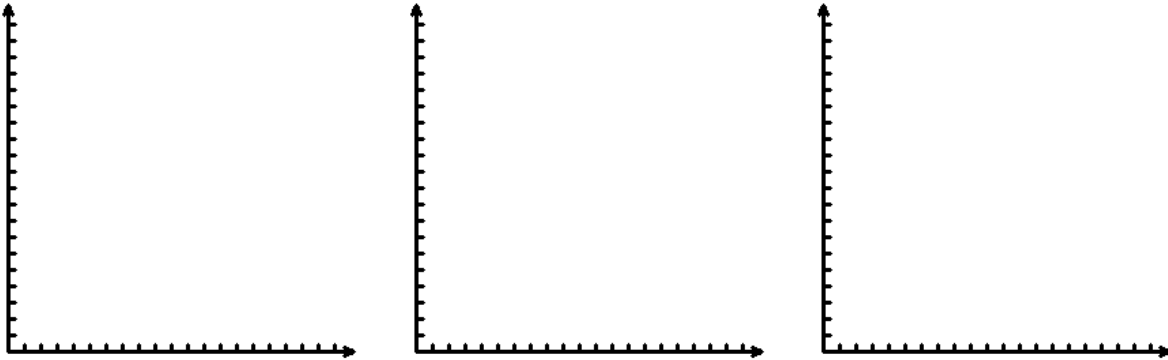
Suggestions:

4) A “V”



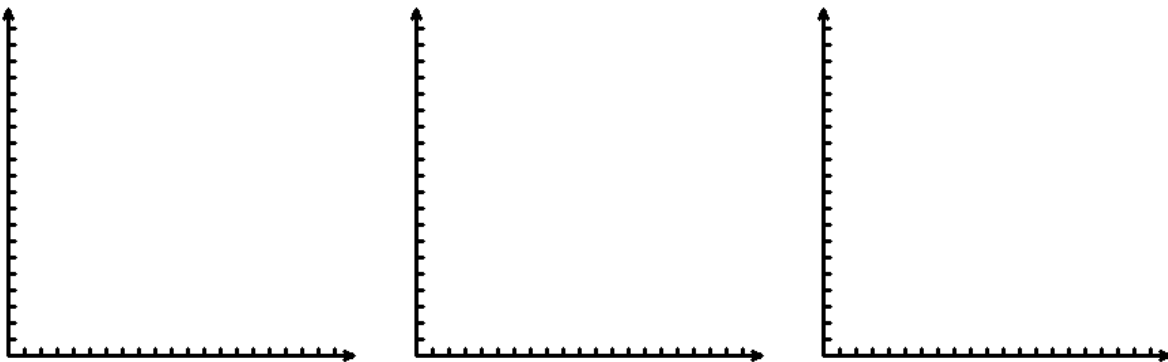
Suggestions:

5) A “U



Suggestions:

6) An “M”



Suggestions:

7) Try creating an O. Are you successful? Why or why not?

8) Name a letter you could graph using the CBR. Name a letter you cannot graph using the CBR. Explain your choices.